

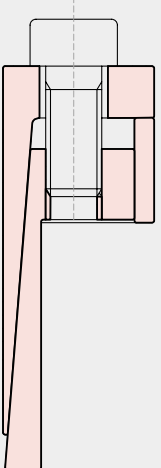
Locking assemblies

Locking assemblies



TLK110

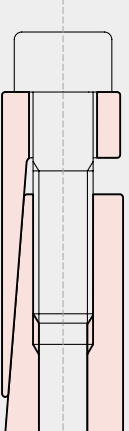
Self-centering
Medium-high torque
Available from 6 mm to 130 mm diameter
Restricted radial encumbrance



Pag. 6

TLK130

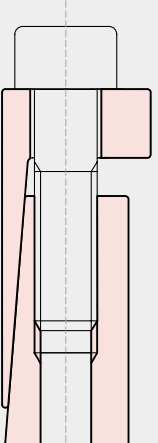
Self-centering
High torque
Available from 20 mm to 180 mm diameter
Quick installation time



Pag. 8

TLK131

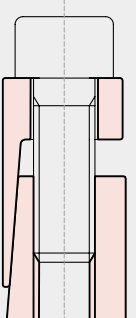
Self-centering
Medium torque
Available from 20 mm to 180 mm diameter
Low surface pressures



Pag. 8

TLK132/139

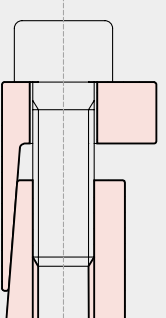
Self-centering
Medium-high torque
TLK 132: Available from 20 mm to 200 mm diameter
TLK 139: Available from 18 mm to 90 mm diameter



Pag. 10 / Pag. 13

TLK133/134

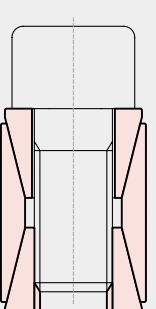
Self-centering
Medium torque
TLK 133: Available from 20 mm to 200 mm diameter
TLK 134: Available from 14 mm to 50 mm diameter



Pag. 10 / Pag. 12

TLK200

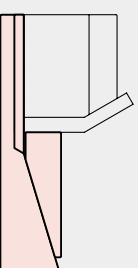
Not self-centering
Medium torque
Available from 20 mm to 900 mm diameter
Self dismantling



Pag. 14

TLK250/250L

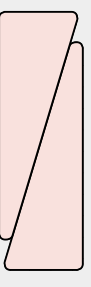
Low torque
Available from 14 mm to 70 mm diameter
TLK 250: not self-centering
TLK 250L: self-centering



Pag. 16

TLK300

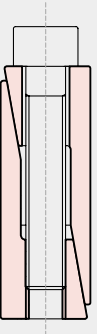
Not self-centering
Low torque
Available from 6 mm to 600 mm diameter
Restricted radial encumbrance



Pag. 18

TLK350

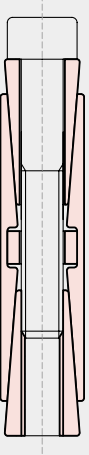
Self-centering
Medium-high torque
Available from 6 mm to 50 mm diameter
Restricted radial encumbrance



Pag. 20

TLK400/401

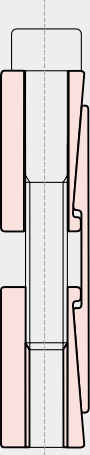
Self-centering
Very high torque
Available from 45 mm to 400 mm diameter
Even pressures distribution



Pag. 21

TLK450/451

Self-centering
Very high torque
Available from 25 mm to 600 mm diameter
Application economically advantageous

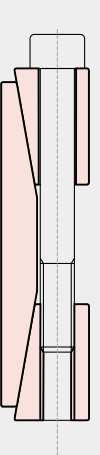


Pag. 24

Shrink discs

TLK500

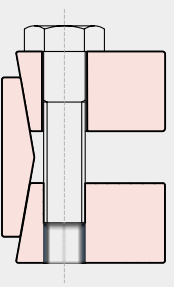
Rigid coupling
Medium torque
Available from 17 mm to 80 mm diameter
Quick installation and dismantling



Pag. 27

TLK601/602/603

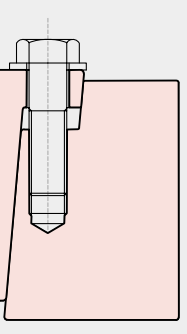
Self-centering
High / very high torque
Available from 14 mm to 480 mm diameter
Quick installation time



Pag. 28

TLK622/623/681/683

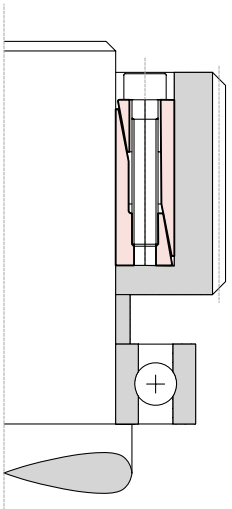
Self-centering
High / very high torque
Available from 12 mm to 620 mm diameter
Quick installation time



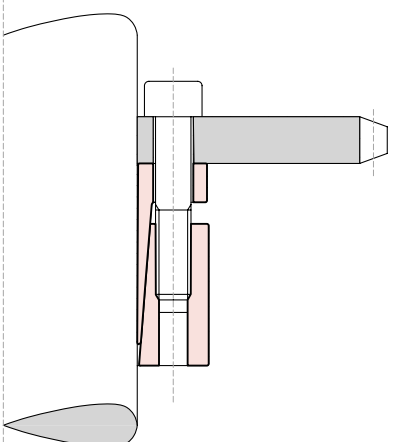
Pag. 34

Locking assemblies

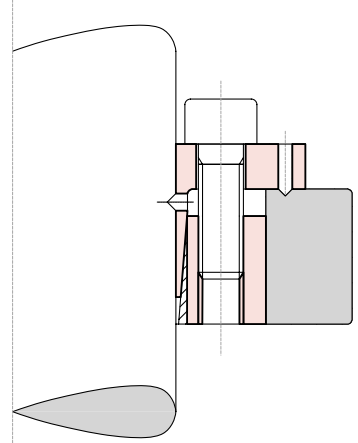
Application examples



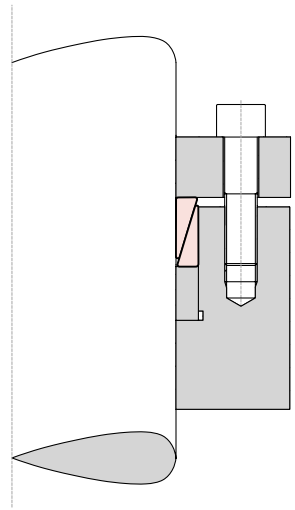
EA01
Bearing axial fastening and gear locking by means of model TLK 350



EA02
Chain sprocket locking by means of model TLK 130 with no split outside ring



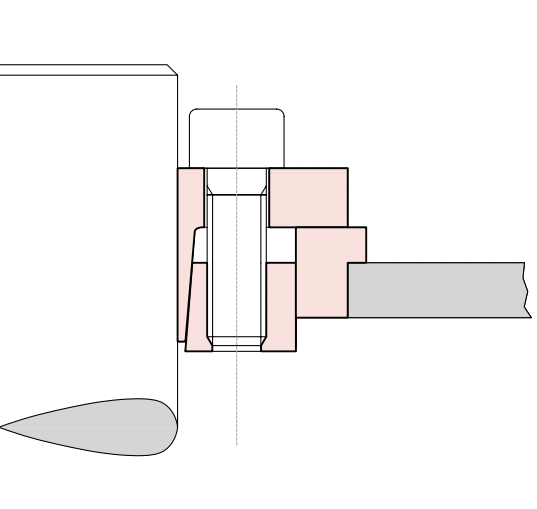
EA07
Cam locking by means of special model TLK 133



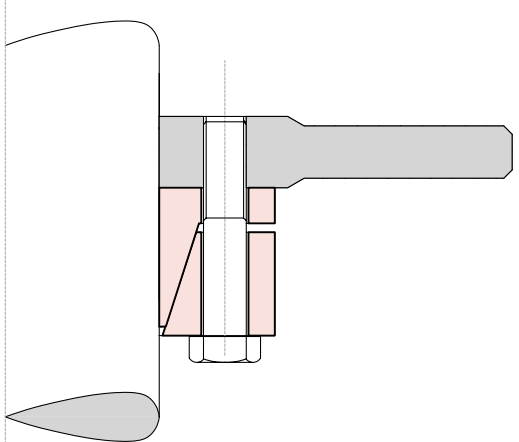
EA08
Use of model TLK 300 without spacer

Locking assemblies

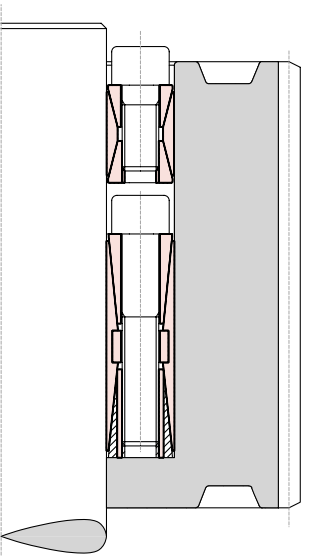
Application examples



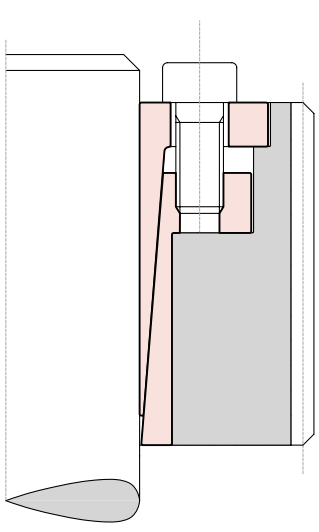
EA03
Thin plate locking by means of model TLK 133 with adapter ring



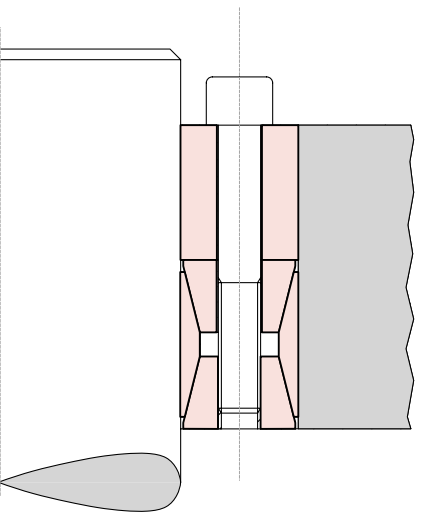
EA04
Break disc locking by means of special model TLK 700



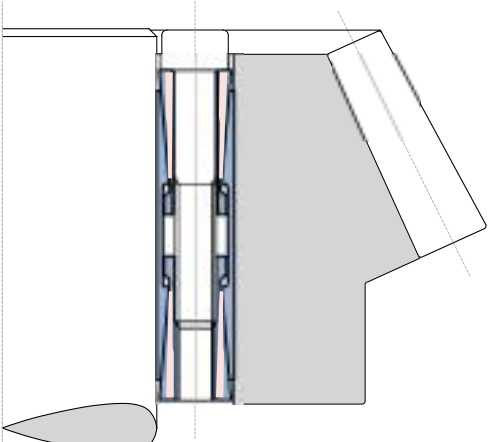
EA09
Use of several locking assemblies in presence of very heavy torque



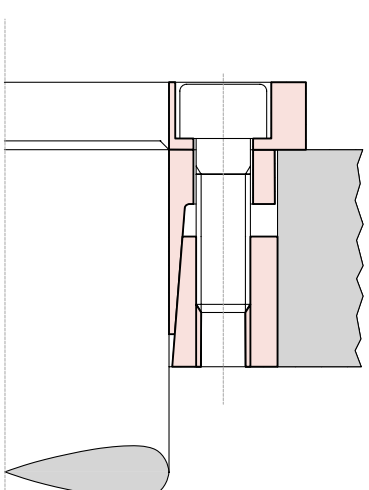
EA10
Use of model TLK 110 in presence of high rpm



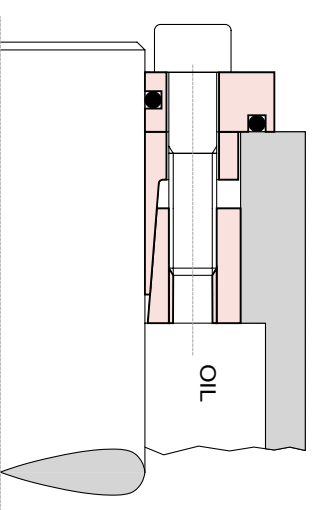
EA05
Hub locking by means of model TLK 200 with a special centering ring



EA06
Large hub locking by means of special version of model TLK 400



EA11
Special version of model TLK 132 with screws protection ring



EA12
Special version of model TLK 132 with retaining ring