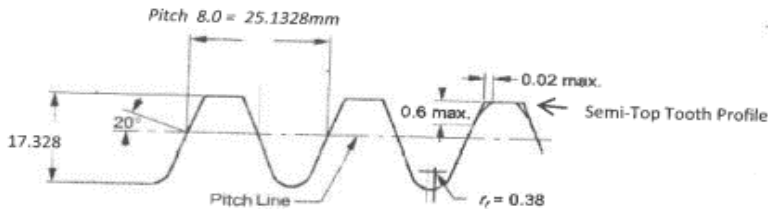
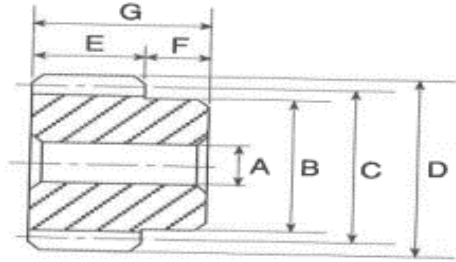
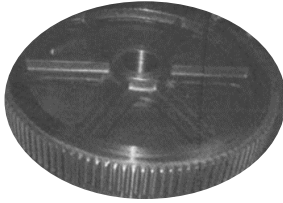


SPUR GEAR



Available in :

Pressure Angle 14 °½

Pressure Angle 20 °

Pressure Angle 25 °

Pressure Angle 30 °

New Tooth Form Semi-Top

Dimensions in mm

Pitch Teeth	OD(D)	P.C.D.(C)	Hub Dia (B)	Bore	Face Width (E)	Total Length (G)
8.0 - 12T	112	96	77	32	75	109
8.0 - 13T	120	104	82	32	75	109
8.0 - 14T	128	112	87	32	75	109
8.0 - 15T	136	120	92	32	75	109
8.0 - 16T	144	128	102	32	75	109
8.0 - 17T	152	136	107	32	75	109
8.0 - 18T	160	144	112	32	75	109
8.0 - 19T	168	152	122	32	75	109
8.0 - 20T	176	160	132	32	75	109
8.0 - 21T	184	168	142	32	75	109
8.0 - 22T	192	176	152	32	75	109
8.0 - 23T	200	184	157	32	75	109
8.0 - 24T	208	192	162	32	75	109
8.0 - 25T	216	200	172	32	75	109
8.0 - 26T	224	208	172	32	75	109
8.0 - 27T	232	216	172	32	75	109
8.0 - 28T	240	224	182	32	75	109
8.0 - 30T	256	240	182	32	75	109
8.0 - 50T	416	400	-	-	-	-
8.0 - 55T	456	440	-	-	-	-
8.0 - 60T	496	480	-	-	-	-
8.0 - 65T	536	520	-	-	-	-

Material : Carbon Steel

Treatment : Induction Hardened Tooth

Required : Bore Diameter and Key groove can be machined upon request

Custom Made : Look for us if you require custom made sizes not stated above