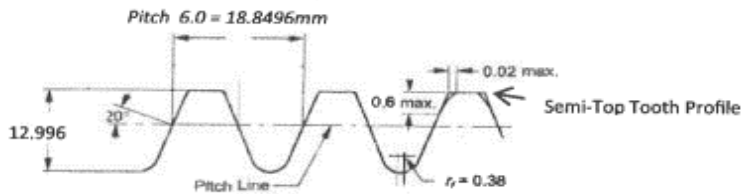
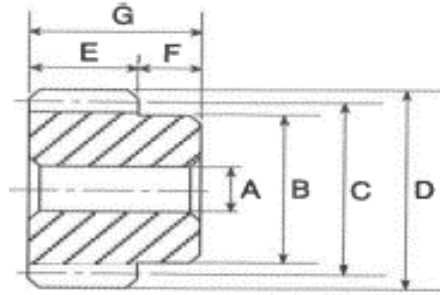


SPUR GEAR



Available in :

Pressure Angle 14 ½°

Pressure Angle 20°

Pressure Angle 25°

Pressure Angle 30°

New Tooth Form Semi-Top

Dimensions in mm

Pitch Teeth	OD(D)	P.C.D.(C)	Hub Dia (B)	Bore	Face Width (E)	Total Length (G)
6.0 - 14T	96	84	62	25	60	87
6.0 - 15T	102	90	72	25	60	87
6.0 - 16T	108	96	77	25	60	87
6.0 - 17T	114	102	80	25	60	87
6.0 - 18T	120	108	82	25	60	87
6.0 - 19T	126	114	92	25	60	87
6.0 - 20T	132	120	102	25	60	87
6.0 - 22T	144	132	112	25	60	87
6.0 - 23T	150	138	117	25	60	87
6.0 - 24T	156	144	122	25	60	87
6.0 - 25T	162	150	127	25	60	87
6.0 - 26T	168	156	132	25	60	87
6.0 - 30T	192	180	152	25	60	87
6.0 - 32T	204	192	152	30	60	82
6.0 - 34T	216	204	152	30	60	82
6.0 - 35T	222	210	152	30	60	82
6.0 - 36T	228	216	152	30	60	82
6.0 - 38T	240	228	152	30	60	82
6.0 - 40T	252	240	152	30	60	82
6.0 - 45T	282	270	182	30	60	82
6.0 - 46T	288	276	182	30	60	82
6.0 - 48T	300	288	182	30	60	82
6.0 - 60T	312	300	182	30	60	82

Material : Carbon Steel

Treatment : Induction Hardened Tooth

Required : Bore Diameter and Key groove can be machined upon request

Custom Made : Look for us if you require custom made sizes not stated above