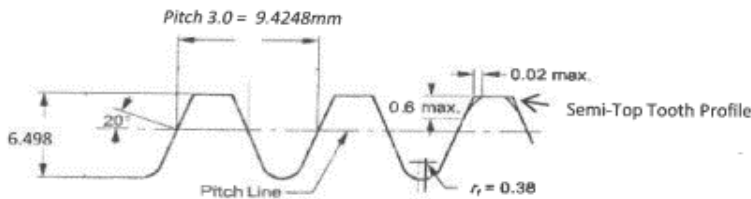
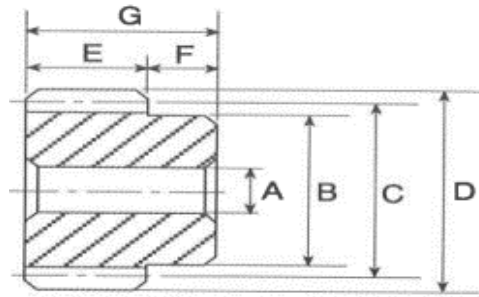
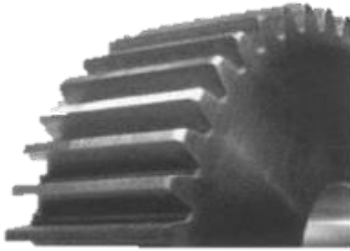


# SPUR GEAR



### Available in :

- Pressure Angle 14 °½
- Pressure Angle 20°
- Pressure Angle 25°
- Pressure Angle 30°

### New Tooth Form Semi - Top

Dimensions in mm

Pitch Teeth	OD(D)	P.C.D.(C)	Hub Dia ( B )	Bore	Face Width ( E )	Total Length ( G )
3.0 - 14T	48	42	34	12	30	44
3.0 - 15T	51	45	38	12	30	44
3.0 - 16T	54	48	40	12	30	44
3.0 - 17T	57	51	41	12	30	44
3.0 - 20T	66	60	52	12	30	44
3.0 - 26T	84	78	67	12	30	44
3.0 - 27T	87	81	67	12	30	44
3.0 - 28T	90	84	72	12	30	44
3.0 - 30T	96	90	77	12	30	44
3.0 - 34T	108	102	82	15	30	44
3.0 - 38T	120	114	82	15	30	44
3.0 - 40T	126	120	82	15	30	44
3.0 - 44T	138	132	82	15	30	44
3.0 - 45T	141	135	82	15	30	44
3.0 - 46T	144	138	82	15	30	44
3.0 - 50T	156	150	82	19	30	44
3.0 - 52T	162	156	82	19	30	44
3.0 - 56T	174	168	82	19	30	44
3.0 - 60T	186	180	82	19	30	44
3.0 - 72T	222	216	92	19	30	44
3.0 - 52T	231	225	92	19	30	44
3.0 - 76T	234	228	92	19	30	44
3.0 - 80T	246	240	92	19	30	44

Material : Carbon Steel

Treatment : Induction Hardened Tooth

Required : Bore Diameter and Key groove can be machined upon request

Custom Made : Look for us if you require custom made sizes not stated above