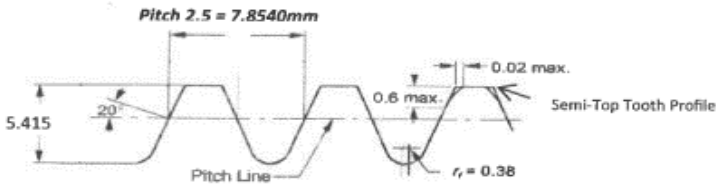
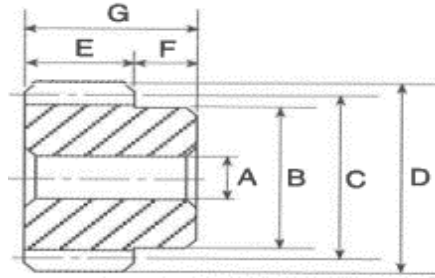


SPUR GEAR



Available in :

Pressure Angle 14 °½

Pressure Angle 20 °

Pressure Angle 25 °

Pressure Angle 30 °

New Tooth Form Semi - Top

Dimensions in mm

Pitch Teeth	OD(D)	P.C.D.(C)	Hub Dia (B)	Bore	Face Width (E)	Total Length (G)
2.5 - 15T	42.5	37.5	32	12	25	36
2.5 - 16T	45	40	34	12	25	36
2.5 - 17T	47.5	42.5	37	12	25	36
2.5 - 18T	50	45	40	12	25	36
2.5 - 20T	52.5	50	42	12	25	36
2.5 - 23T	62.5	57.5	48	12	25	36
2.5 - 24T	65	60	50	12	25	36
2.5 - 25T	67.5	62.5	52	12	25	36
2.5 - 30T	80	75	67	12	25	36
2.5 - 32T	85	80	72	15	25	36
2.5 - 34T	90	85	72	15	25	36
2.5 - 36T	95	90	72	15	25	36
2.5 - 40T	105	100	72	15	25	36
2.5 - 44T	115	110	72	15	25	36
2.5 - 45T	117.5	112.5	72	15	25	36
2.5 - 46T	120	115	72	15	25	36
2.5 - 50T	130	125	72	15	25	36
2.5 - 52T	135	130	72	15	25	36
2.5 - 54T	140	135	72	15	25	36
2.5 - 56T	145	140	72	19	25	36
2.5 - 60T	155	150	72	19	25	36
2.5 - 66T	170	165	82	19	25	36
2.5 - 70T	175	175	82	19	25	36

Material : Carbon Steel

Treatment : Induction Hardened Tooth

Required : Bore Diameter and Key groove can be machined upon request

Custom Made : Look for us if you require custom made sizes not stated above