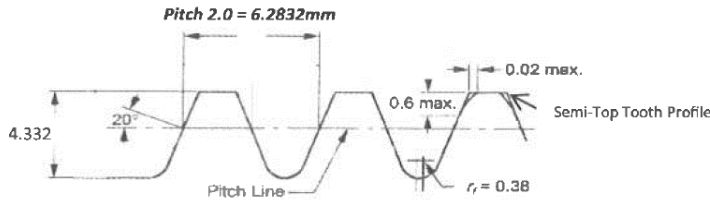
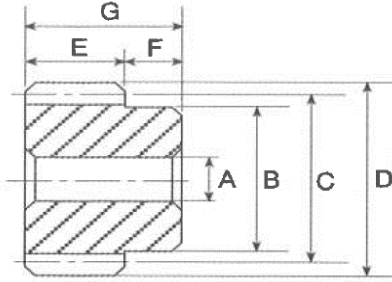


SPUR GEAR



Available in :

- Pressure Angle 14 ½°
- Pressure Angle 20°
- Pressure Angle 25°
- Pressure Angle 30°

New Tooth Form Semi - Top

Dimensions in mm

Pitch Teeth	OD(D)	P.C.D.(C)	Hub Dia (B)	Bore	Face Width (E)	Total Length (G)
2.0 - 12T	28	24	20	10	20	29
2.0 - 14T	32	28	22	10	20	29
2.0 - 20T	44	40	34	10	20	29
2.0 - 23T	50	46	39	10	20	29
2.0 - 27T	58	54	47	10	20	29
2.0 - 30T	64	60	52	10	20	29
2.0 - 34T	72	68	52	12	20	29
2.0 - 38T	80	76	57	12	20	29
2.0 - 40T	84	80	57	12	20	29
2.0 - 45T	94	90	57	12	20	29
2.0 - 48T	100	96	57	12	20	29
2.0 - 50T	104	100	57	12	20	29
2.0 - 52T	108	104	57	15	20	29
2.0 - 56T	116	112	57	15	20	29
2.0 - 60T	124	120	62	15	20	29
2.0 - 62T	128	124	62	15	20	29
2.0 - 68T	140	136	62	15	20	29
2.0 - 70T	144	140	62	15	20	29
2.0 - 72T	148	144	62	15	20	29
2.0 - 80T	164	160	62	15	20	29
2.0 - 84T	172	168	72	15	20	29
2.0 - 85T	174	170	72	15	20	29
2.0 - 90T	184	180	72	15	20	29

Material : Carbon Steel *Treatment* : Induction Hardened Tooth
Required : Bore Diameter and Key groove can be machined upon request
Custom Made : Look for us if you require custom made sizes not stated above