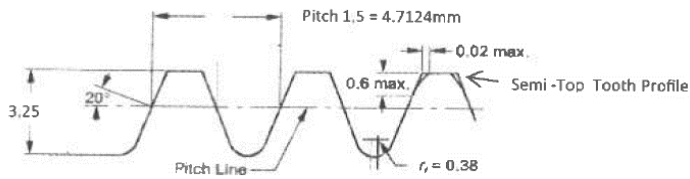
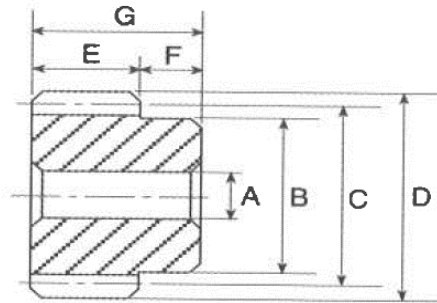


SPUR GEAR



Available in :

Pressure Angle $14\frac{1}{2}^\circ$ Tooth

Pressure Angle 20° Tooth

Pressure Angle 25° Tooth

Pressure Angle 30° Tooth

New Tooth Form Semi - Top

Dimensions in mm

Pitch Teeth	OD(D)	P.C.D.(C)	Hub Dia (B)	Bore	Face Width (E)	Total Length (G)
1.5 - 14T	24	21	18	10	15	24
1.5 - 18T	30	27	24	10	15	24
1.5 - 20T	33	30	26	10	15	24
1.5 - 23T	37.5	34.5	29	10	15	24
1.5 - 27T	43.5	40.5	36	10	15	24
1.5 - 30T	48	45	40	10	15	24
1.5 - 34T	54	51	42	10	15	24
1.5 - 38T	60	57	47	10	15	24
1.5 - 40T	63	60	47	12	15	24
1.5 - 42T	66	63	47	12	15	24
1.5 - 46T	72	69	47	12	15	24
1.5 - 48T	75	72	47	12	15	24
1.5 - 50T	78	75	47	12	15	24
1.5 - 54T	84	81	52	15	15	24
1.5 - 56T	87	84	52	15	15	24
1.5 - 60T	93	90	52	15	15	24
1.5 - 64T	99	96	57	15	15	24
1.5 - 65T	100.5	97.5	57	15	15	24
1.5 - 70T	108	105	57	15	15	24
1.5 - 72T	111	108	82	15	15	24
1.5 - 75T	111.5	112.5	82	15	15	24
1.5 - 76T	117	114	82	15	15	24
1.5 - 80T	123	120	42	15	15	24

Material : Carbon Steel

Treatment : Induction Hardened Tooth

Required : Bore Diameter and Key groove can be machined upon request

Custom Made : Look for us if you require custom made sizes not stated above