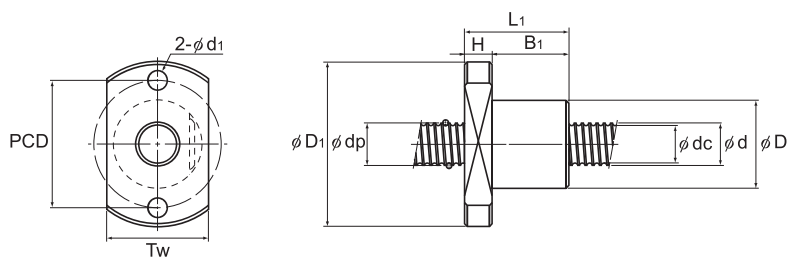


MTF No Preload

DN value	5000
----------	------



Unit: mm

Model No.	Screw shaft outer diameter d	Lead Ph	Ball center-to-center diameter dp	Thread minor diameter dc	No. of loaded circuits Rows X turns	Basic load rating		Rigidity K N/μm	Nut dimensions		
						Ca kN	Ca kN		Outer diameter D	Flange diameter D ₁	Overall length L ₁
MTF 0601-3.7	6	1	6.15	5.3	1×3.7	0.7	1.2	70	13	30	21
MTF 0802-3.7	8	2	8.3	6.6	1×3.7	2.1	3.8	90	20	40	28
MTF 1002-3.7	10	2	10.3	8.6	1×3.7	2.3	4.8	110	23	43	28
MTF 1202-3.7	12	2	12.3	10.6	1×3.7	2.5	5.8	130	25	47	30

Model No.	Nut dimensions					Axial clearance	Standard shaft length	Screw shaft inertial moment/mm kg-cm ² /mm	Nut mass kg	Shaft mass kg/m
	H	B ₁	PCD	d ₁	Tw					
MTF 0601-3.7	5	16	21.5	3.4	17	0.05	150, 250	9.99×10 ⁻⁶	0.03	0.19
MTF 0802-3.7	6	22	30	4.5	24	0.05	150, 250	3.16×10 ⁻⁵	0.08	0.31
MTF 1002-3.7	6	22	33	4.5	27	0.05	200, 300	7.71×10 ⁻⁵	0.1	0.52
MTF 1202-3.7	8	22	36	5.5	29	0.05	200, 300	1.6×10 ⁻⁴	0.13	0.77

Note) Model MTF cannot be attached with seal.
 Model MTF is only sold as sets (ball screw nut and screw shaft).
 Model MTF is applied only with anti-rust oil.

Model number coding

MTF 0802-3.7 +250L C7 T

Model No.

Overall screw shaft length (in mm)

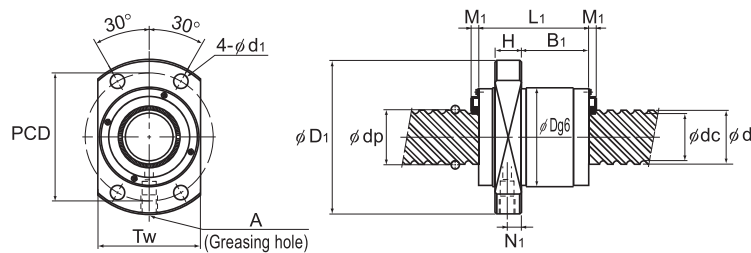
Symbol for rolled shaft

Accuracy code: (No code for Normal Grade)

Rolled Ball Screw

WHF (Rolled Ball Screw) No Preload

DN value	100000
----------	--------



Unit: mm

Model No.	Screw shaft outer diameter d	Lead Ph	Ball center-to-center diameter dp	Thread minor diameter dc	No. of loaded circuits Rows × turns	Basic load rating		Rigidity K	Nut dimensions				
						Ca kN	C _{0a} kN		Outer diameter D	Flange diameter D ₁	Overall length L ₁	H	B ₁
WHF 1530-3.4	15	30	15.75	12.5	2×1.7	5.5	12.2	195	32	53	64.5	10	47.5
WHF 2020-3.4	20	20	20.75	17.5	2×1.7	6.6	18.9	225	42	64	47.1	10	24.1
WHF 2040-3.4	20	40	20.75	17.5	2×1.7	6.6	17.2	256	37	62	82.7	10	65.7
WHF 2525-3.4	25	25	26	21.9	2×1.7	10.5	29.9	285	50	77	58.8	12	31.3
WHF 2550-3.4	25	50	26	21.9	2×1.7	10.4	27.1	323	45	69	103.3	12	79.3

Model No.	Nut dimensions			Greasing hole		Seal M ₁	Axial clearance	Standard shaft length	Screw shaft inertial moment/mm kg-cm ² /mm	Nut mass kg	Shaft mass kg/m
	PCD	d _i	Tw	N _i	A						
WHF 1530-3.4	43	5.5	33	5	M6	3.5	0.1	500, 1000, 1500	3.9×10 ⁻⁴	0.38	1.26
WHF 2020-3.4	53	5.5	46	5	M6	3.5	0.1	500, 1000, 1500	1.23×10 ⁻³	0.49	2.25
WHF 2040-3.4	50	5.5	46	5	M6	3.5	0.1	500, 1000, 1500, 2000	1.23×10 ⁻³	0.58	2.34
WHF 2525-3.4	63	6.6	56	6	M6	3.5	0.1	1000, 1500, 2000	3.01×10 ⁻³	0.65	3.52
WHF 2550-3.4	57	6.6	46	6	M6	3.5	0.1	1000, 1500, 2000	3.01×10 ⁻³	0.72	3.66

Note) WHF is available on a made-to-order basis. If planning to use this model, contact THK.

The overall length of the nut will increase when equipping the QZ lubricating device. See [A15-344](#) for further details.

Model number coding

WHF2040-3.4 -ZZ +1500L C7 T T1K

Model No.

Contamination protection accessory symbol (*1)

Overall screw shaft length (in mm)

Symbol for rolled shaft

Accuracy symbol (*2) Recommended shaft ends shape code

(*1) See [A15-336](#). (*2) See [A15-12](#).Options⇒ [A15-335](#)
A15-275