

GEAR UNIT CAD CONFIGURATION

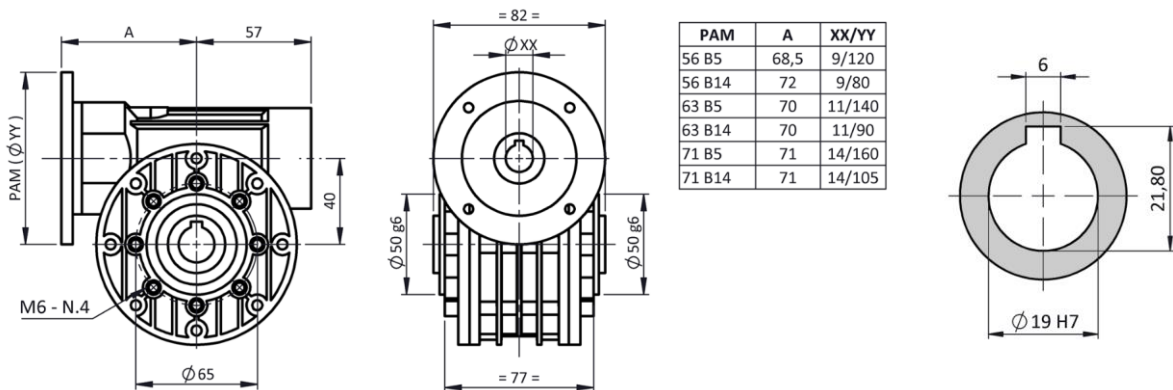
TYPE	MI
SIZE	40
DOUBLE EXTENDED WORM SHAFT	NO
PAM	PAM56B5
HOLLOW OUTPUT SHAFT	D.19
FIXING	SHAFT MOUNTING
VERSION	FP
MOUNTING POSITION	B5

ACCESSORIES

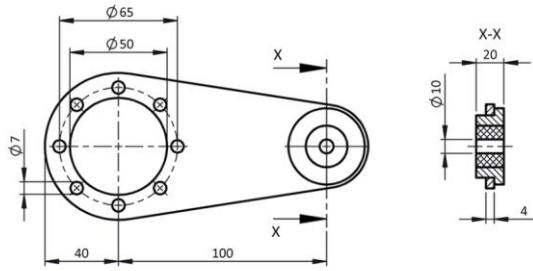
OPTIONAL

MOUNTED ELECTRIC MOTOR	NO
TORQUE LIMITER	NO
TORQUE ARM	NO
SOLID OUTPUT SHAFT	NO

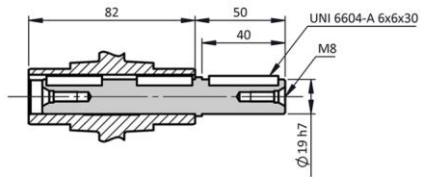
ATEX	NO
LUBRICANT	LONG LIFE SYNTHETIC OIL ISO VG 320



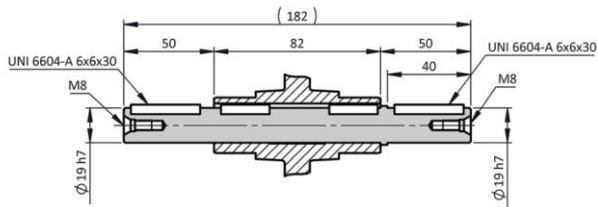
AVAILABLE ACCESSORIES



TORQUE ARM



SINGLE EXTENDED OUTPUT SHAFT



DOUBLE EXTENDED OUTPUT SHAFT

