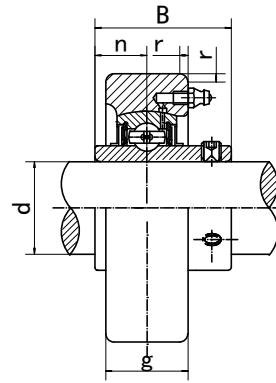
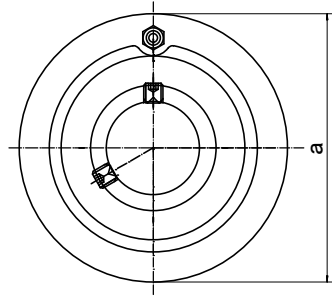


UCC2 (Normal-duty)

Cartridge Units



Unit NO.	Dimensions (mm / in.)						Bearing No.	Housing No.	Weight (kg)
	d	a	g	r	B	n			
UCC201 201-8	12 1/2	72 2.8346	20 25/32	2 0.079	31 1.2205	12.7 0.500	UC201 UC201-8	C201	0.52 0.51
UCC202 202-9 202-10	15 9/16 5/8	72 2.8346	20 25/32	2 0.079	31 1.2205	12.7 0.500	UC202 UC202-9 UC202-10	C202	0.51 0.51 0.51
UCC203 203-11	17 11/16	72 2.8346	20 25/32	2 0.079	31 1.2205	12.7 0.500	UC203 UC203-11	C203	0.50 0.49
UCC204 204-12	20 3/4	72 2.8346	20 25/32	2 0.079	31 1.2205	12.7 0.500	UC204 UC204-12	C204	0.48 0.48
UCC205 205-13 205-14 205-15 205-16	25 13/16 7/8 15/16 1	80 3.1496	22 55/64	2 0.079	34.1 1.3425	14.3 0.563	UC205 UC205-13 UC205-14 UC205-15 UC205-16	C205	0.63 0.67 0.66 0.64 0.63
UCC206 206-17 206-18 206-19 206-20	30 1-1/16 1-1/8 1-3/16 1-1/4	85 3.3465	27 1-1/16	2 0.079	38.1 1.5000	15.9 0.626	UC206 UC206-17 UC206-18 UC206-19 UC206-20	C206	0.79 0.80 0.81 0.79 0.78
UCC207 207-20 207-21 207-22 207-23	35 1-1/4 1-5/16 1-3/8 1-7/16	90 3.5433	28 1-7/64	2 0.079	42.9 1.6890	17.5 0.689	UC207 UC207-20 UC207-21 UC207-22 UC207-23	C207	0.88 0.94 0.91 0.88 0.85
UCC208 208-24 208-25	40 1-1/2 1-9/16	100 3.9370	30 1-3/16	2.5 0.098	49.2 1.9370	19 0.748	UC208 UC208-24 UC208-25	C208	1.17 1.21 1.18
UCC209 209-26 209-27 209-28	45 1-5/8 1-11/16 1-3/4	110 4.3307	31 1-7/32	2.5 0.098	49.2 1.9370	19 0.748	UC209 UC209-26 UC209-27 UC209-28	C209	1.46 1.56 1.52 1.48
UCC210 210-29 210-30 210-31 210-32	50 1-13/16 1-7/8 1-15/16 2	120 4.7244	33 1-19/64	2.5 0.098	51.6 2.0315	19 0.748	UC210 UC210-29 UC210-30 UC210-31 UC210-32	C210	1.85 1.97 1.92 1.87 1.83
UCC211 211-32 211-33 211-34 211-35	55 2 2-1/16 2-1/8 2-3/16	125 4.9213	35 1-3/8	2.5 0.098	55.6 2.1890	22.2 0.874	UC211 UC211-32 UC211-33 UC211-34 UC211-35	C211	2.05 2.20 2.14 2.10 2.03
UCC212 212-36 212-37 212-38 212-39	60 2-1/4 2-5/16 2-3/8 2-7/16	130 5.1181	38 1-1/2	2.5 0.098	65.1 2.5630	25.4 1.000	UC212 UC212-36 UC212-37 UC212-38 UC212-39	C212	2.36 2.49 2.41 2.34 2.27
UCC213 213-40 213-41	65 2-1/2 2-9/16	140 5.5118	40 1-37/64	3 0.118	65.1 2.5630	25.4 1.000	UC213 UC213-40 UC213-41	C213	2.79 2.88 2.79