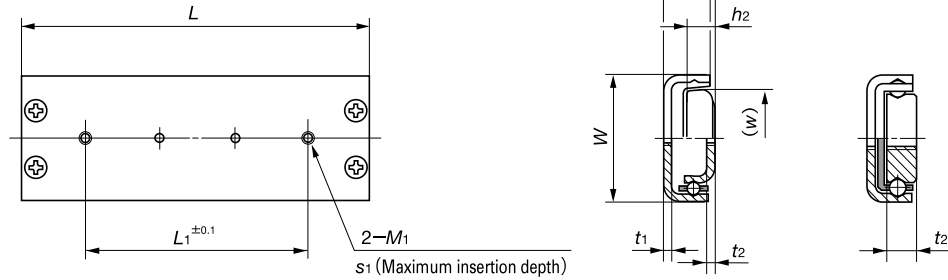


IKO Precision Linear Slide

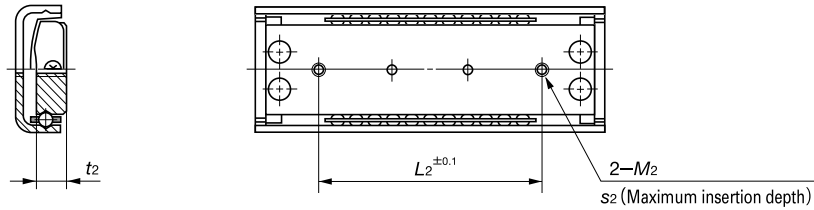
Limited linear motion type : BSP



BSP 7

Model number	Mass (Ref.) g	Nominal dimensions mm				Mounting dimensions of table mm				
		W	H	L	Maximum stroke length	L ₁	M ₁	Maximum insertion depth s ₁	h ₁	t ₁
BSP 7 15 SL⁽¹⁾	2.1	7	4	15	9	5	M2	1	3.4	0.9
BSP 7 20 SL⁽¹⁾	2.8			20	9	10				
BSP 7 30 SL⁽¹⁾	4.2			30	18	20				
BSP 7 40 SL⁽¹⁾	5.6			40	23	30				
BSP 10 25 SL	6.2	10	6	25	15	15	M2.6	1.5	5.8	1.1
BSP 10 35 SL	8.8			35	26	25				
BSP 10 45 SL	11.3			45	38	35				
BSP 15 30 SL	11	15	8	30	22	14	M3	2.5	7	1.2
BSP 15 40 SL	14.7			40	24	24				
BSP 15 50 SL	18.4			50	32	34				
BSP 15 60 SL	22.1			60	40	40				
BSP 20 40 SL	23.7	20	10	40	22	24	M3	3.2	9	1.4
BSP 20 50 SL	29.7			50	28	34				
BSP 20 60 SL	35.7			60	34	40				
BSP 20 70 SL	41.7			70	40	45				
BSP 20 80 SL	47.6			80	53	50				
BSP 25 50 SL	37.6	25	10	50	26	34	M3	3.5	9	1.6
BSP 25 60 SL	45.3			60	32	40				
BSP 25 70 SL	52.9			70	40	45				
BSP 25 80 SL	60.5			80	51	50				
BSP 25 100 SL	75.8			100	63	60				

Note(1) : BSP 715 SL ~ BSP 740 SL can not be mounted from inside of the table and bed.



BSP 10

Mounting dimensions of bed mm						Basic dynamic load rating C N	Basic static load rating C ₀ N	Model number
w	L ₂	M ₂	Maximum insertion depth s ₂	h ₂	t ₂			
3.6	5	M2	2	—	2	80.6	41.8	BSP 7 15 SL⁽¹⁾
	10					115	69.6	BSP 7 20 SL⁽¹⁾
	20					146	97.5	BSP 7 30 SL⁽¹⁾
	30					174	125	BSP 7 40 SL⁽¹⁾
6.2	15	M2.6	2.7	3.7	2.7	293	155	BSP 10 25 SL
	25					342	193	BSP 10 35 SL
	35					389	232	BSP 10 45 SL
11.2	14	M3	3	4.5	1.2	339	193	BSP 15 30 SL
	24					471	309	BSP 15 40 SL
	34					551	387	BSP 15 50 SL
	40					626	464	BSP 15 60 SL
16	24	M3	3.5	6.2	1.4	623	384	BSP 20 40 SL
	34					743	493	BSP 20 50 SL
	40					855	603	BSP 20 60 SL
	45					961	713	BSP 20 70 SL
	50					1 010	768	BSP 20 80 SL
20.5	34	M3	3	5.7	1.6	743	493	BSP 25 50 SL
	40					855	603	BSP 25 60 SL
	45					961	713	BSP 25 70 SL
	50					1 010	768	BSP 25 80 SL
	60					1 210	987	BSP 25 100 SL