

GEAR UNIT CAD CONFIGURATION

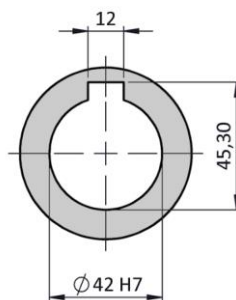
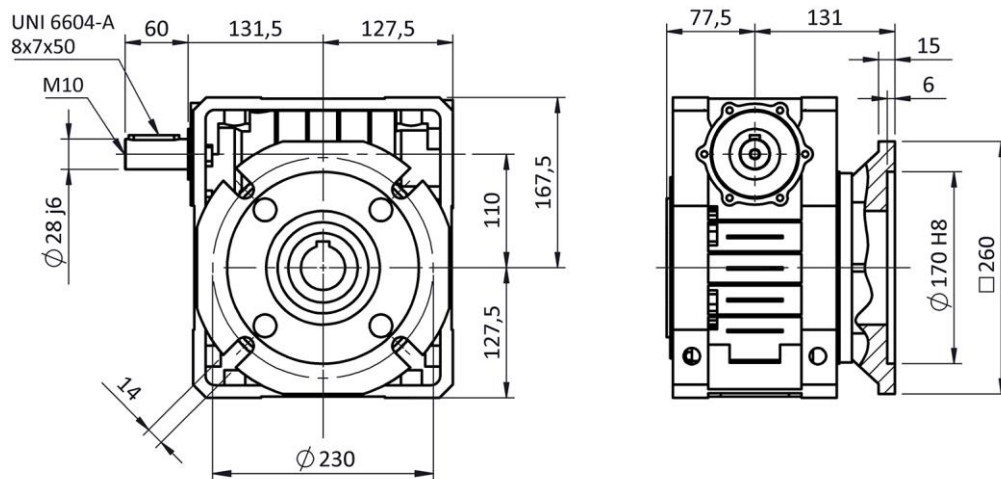
TYPE	U
SIZE	110
DOUBLE EXTENDED WORM SHAFT	NO
PAM	ND
HOLLOW OUTPUT SHAFT	D42
FIXING	OUTPUT_FLANGE
VERSION	FBM - POSITION DX
MOUNTING POSITION	B3

ACCESSORIES

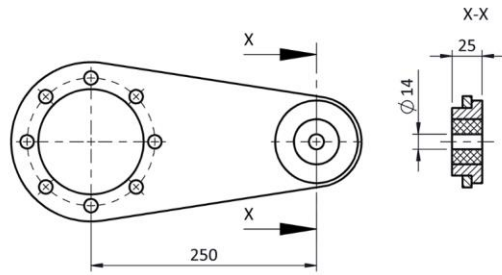
OPTIONAL

MOUNTED ELECTRIC MOTOR	NO
TORQUE ARM	NO
EXTENDED OUTPUT SHAFT	NO

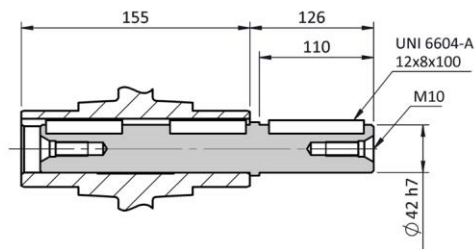
ATEX	NO
LUBRICANT	LONG LIFE SYNTHETIC OIL ISO VG 320



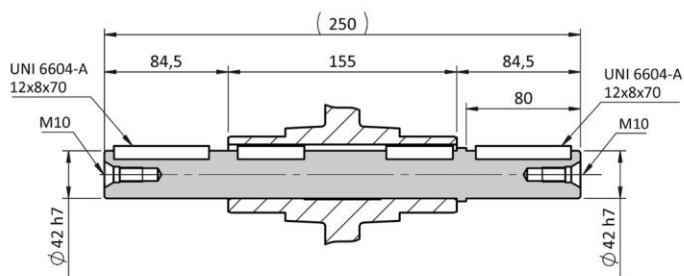
AVAILABLE ACCESSORIES



TORQUE ARM



SINGLE EXTENDED OUTPUT SHAFT



DOUBLE EXTENDED OUTPUT SHAFT

