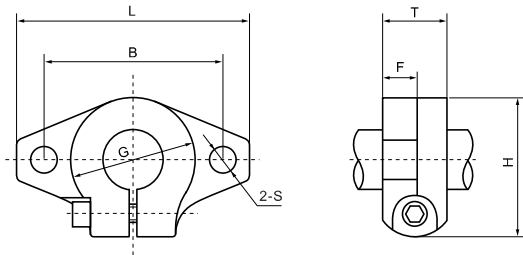




SHF

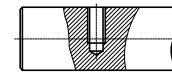


型号 Model	轴径 Shaft diameter	尺寸 Dimensions (mm)							安装螺栓型号 Mounting bolt designation	夹紧螺栓型号 Clamping bolt designation	重量 Weight (g)
		L	T	F	B	G	H	S			
SHF3	φ3	43	10	5	32	20	24	5.5	M5	M4	13
SHF4	φ4	43	10	5	32	20	24	5.5	M5	M4	13
SHF5	φ5	43	10	5	32	20	24	5.5	M5	M4	13
SHF6	φ6	43	10	5	32	20	24	5.5	M5	M4	13
SHF8	φ8	43	10	5	32	20	24	5.5	M5	M4	13
SHF10	φ10	43	10	5	32	20	24	5.5	M5	M4	13
SHF12	φ12	47	13	7	36	25	28	5.5	M5	M4	20
SHF13	φ13	47	13	7	36	25	28	5.5	M5	M4	20
SHF16	φ16	50	16	8	40	28	31	5.5	M5	M4	27
SHF20	φ20	60	20	8	48	34	37	7	M6	M5	40
SHF25	φ25	70	25	10	56	40	42	7	M6	M5	60
SHF30	φ30	80	30	12	64	46	50	9	M8	M6	110
SHF35	φ35	92	35	14	72	50	58	12	M10	M8	380
SHF40	φ40	102	40	16	80	56	67	12	M10	M10	510
SHF50	φ50	122	50	19	96	70	83	14	M12	M12	890
SHF60	φ60	140	60	23	112	82	95	14	M12	M12	1,500

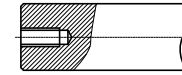
轴 Shafts



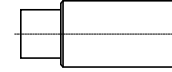
径向螺纹孔
Radial Holes Drolled and Tapped



轴向螺纹孔
Coaxial Holes Drolled and Tapped



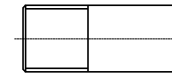
阶梯轴
Reduced Shaft Diameter



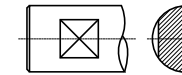
切槽
Snap Ring Grooves



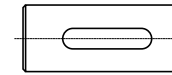
螺纹
Thread



平面
Flats



键槽
Key way



SNB直线轴是经热处理、磨削和抛光的高精度的产品。为直线轴承配套的直线轴，其直线性、粗糙度、圆柱度、表面质量和硬度是极其重要的。SNB直线轴在制造时围绕以上几点使其在任何工作条件下都能良好的工作。这些直线轴能支撑旋转运动、直线运动和旋转直线复合运动以及单纯的直线运动。

SNB slide shaft is hardened, ground and polished and features high precision quality. Straightness, roughness, cylindricity, surface finish and hardness are very important when used with linear motion slide bearings. SNB slide shafts are manufactured with these points in mind to maintain precision performance under any operating conditions. These slide shafts will satisfactorily support rotary, linear, linear-rotary complex, as well as simple linear motion applications.

材质 Material: GCr15高碳铬钢 High carbon chromium steel

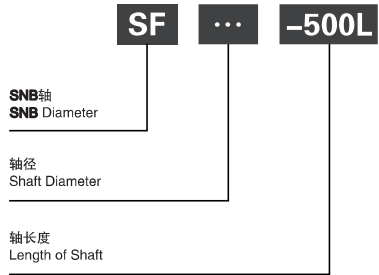
硬度 Hardness: HRC 62 ± 2

表面硬化厚度 Effective Hardening Depth: 0.8-2.5mm

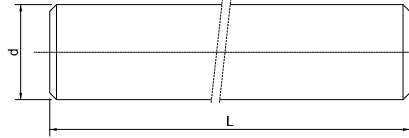
表面粗糙度 Roughness: Ra0.8

直线度 Straightness: 50μm /300mm

图(Fig) 直线轴举例
Examples for Shafts



SF	直线轴 LINEAR SHAFT
SFC	电镀直线轴 HARD CHROMIC PLATING SHAFT
SSF	不锈钢直线轴 9Cr18 SHAFT
PSF	空心轴 LM PIPE SHAFT



型号 Model	轴径 Shaft diameter (g6)		尺寸 Dimensions (mm)												
	d (mm)	公差 Tolerance (μ m)	100	200	300	400	500	600	700	800	1000	1200	1300	1500	2000
SF3	ϕ 3	-0.002 -0.008	○	○	⊙	-	-	-	-	-	-	-	-	-	-
SF4	ϕ 4	-0.004	○	○	⊙	⊙	-	-	-	-	-	-	-	-	-
SF5	ϕ 5	-0.012	○	○	○	⊙	-	-	-	-	-	-	-	-	-
SF6	ϕ 6	-0.012	○	○	○	○	⊙	-	-	-	-	-	-	-	-
SF8	ϕ 8	-0.005	○	○	○	○	⊙	-	-	-	-	-	-	-	-
SF10	ϕ 10	-0.014	○	○	○	○	○	○	○	⊙	⊙	○	○	-	-
SF12	ϕ 12	-0.006	-	○	○	○	○	○	○	⊙	⊙	○	○	-	-
SF13	ϕ 13	-0.017	-	○	○	○	○	○	○	⊙	⊙	○	○	-	-
SF16	ϕ 16	-0.017	-	○	○	○	○	○	○	⊙	⊙	○	○	-	-
SF20	ϕ 20	-0.007	-	○	○	○	○	○	○	⊙	⊙	○	○	○	○
SF25	ϕ 25	-0.020	-	○	○	○	○	○	○	⊙	⊙	○	○	○	○
SF30	ϕ 30	-0.020	-	-	○	○	○	○	○	⊙	⊙	○	○	○	○
SF35	ϕ 35	-0.009	-	-	-	○	○	○	○	⊙	⊙	○	○	○	○
SF40	ϕ 40	-0.025	-	-	-	○	○	○	○	⊙	⊙	○	○	○	○
SF50	ϕ 50	-0.010	-	-	-	○	○	○	○	⊙	⊙	○	○	○	○
SF60	ϕ 60	-0.029	-	-	-	-	-	-	-	⊙	⊙	○	○	○	○
SF80	ϕ 80	-0.029	-	-	-	-	-	-	-	-	⊙	⊙	○	○	○
SF100	ϕ 100	-0.012 -0.034	-	-	-	-	-	-	-	-	⊙	⊙	○	○	○

○ 标准库存品 Standard Length
⊙ 标准库存品 The Length to order

直线轴承代号对照表 Linear Bearing Code Table

亚洲公制 (Used in Asia)

轴承代号 Bearing code	生产公司 Manufacturer						
	中国 (CHINA)			日本 (JAPAN)			南韩 (SOUTH KOREA)
LM	MYT	太敬	IBI (台湾)	THK	HEPHAIST	IKO	SAMICK
				NACHI	NB		意大利 (ITALY)
SM				NSK			
LB				EASE			
SDM				NTN			
KLM							

欧洲公制 (Used in Europe)

LME	中国 (CHINA)			日本 (JAPAN)			南韩 (SOUTH KOREA)
	MYT	太敬	THK	HEPHAIST	IKO	SAMICK	
KB	德国 (GERMANY)			NACHI		NB	意大利 (ITALY)
	INA						
SDM				EASE			

美洲公制 (Used in US)

LMB	中国 (CHINA)			日本 (JAPAN)			南韩 (SOUTH KOREA)
	MYT	太敬	THK	HEPHAIST	IKO	SAMICK	
SW				NACHI		NB	意大利 (ITALY)
SDB				EASE			

公制系列: 国际标准(ISO10285)及中国标准(GB/T16940)
基本代号: LB

